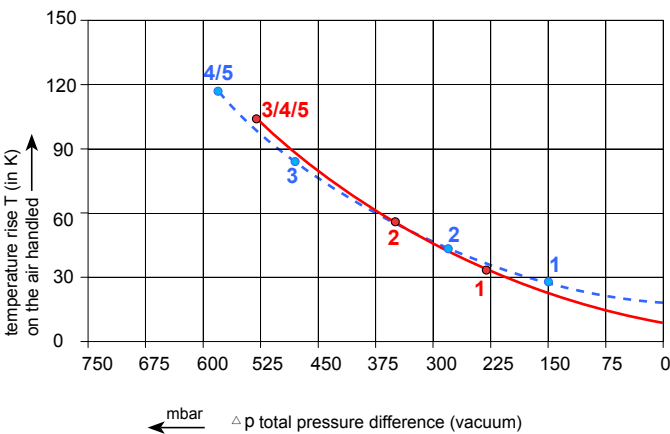
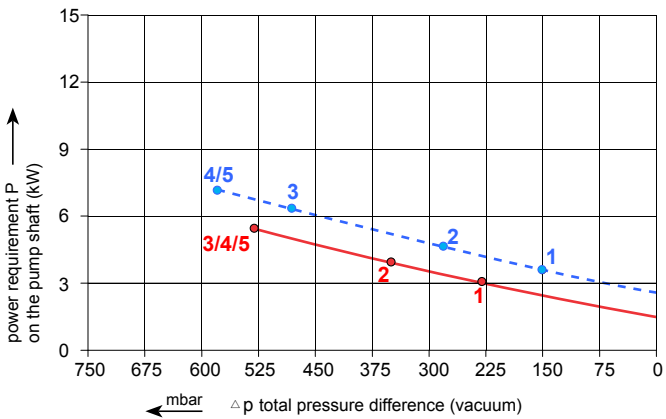
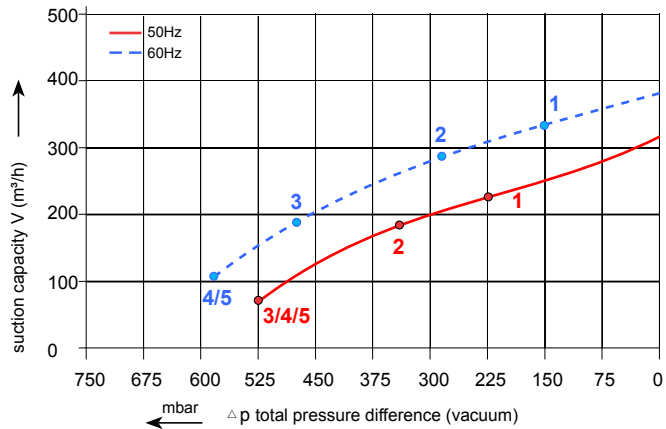


Data sheet 3MV 350-2

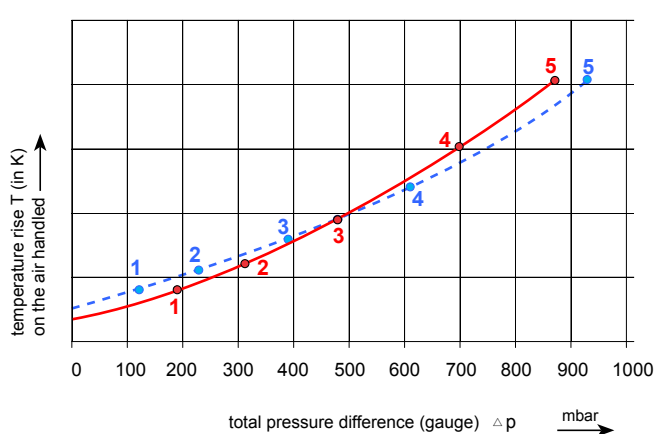
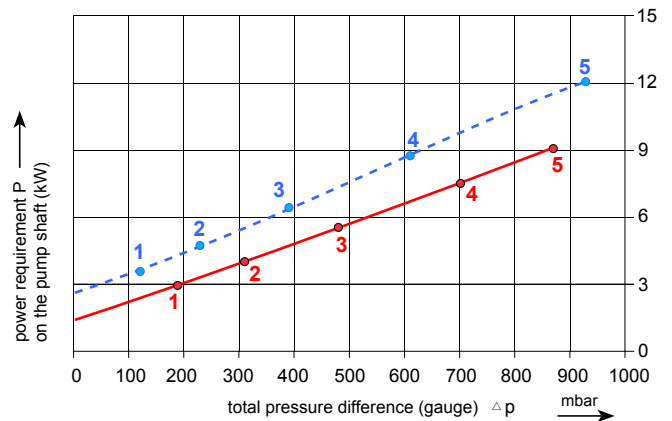
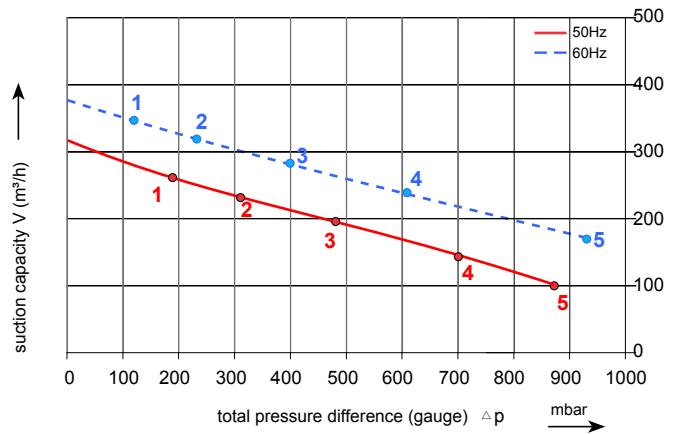
Side channel blower with IE2-motors



Performance curve for Vacuum pump



Performance curve for Compressor



The performance curves are based on air at a temperature of 15 °C and atmospheric pressure of 1013 mbar with a tolerance of +/- 10 %. The total pressure differences are valid for suction and ambient temperatures up to 25 °C. For other conditions please confer with us.

Each 3MV type can be applied both as vacuum pump and compressor in continuous operation over the total stated performance curve range. The motors are available as standard for the input voltage range of 50 and 60 Hz and for protection category IP 55.

Selection and ordering data

Type 3MV350-2

Curve No.	Order No.	Frequency Hz	Rated Power KW	Input voltage V	Input current A	Permissible total differential pressure ²⁾		Sound pressure level ³⁾ dB(A)	Weight ca. kg
						Vacuum mbar	Compressor mbar		
3~ 50/60 Hz IP55 insulation material class F									
1	3MV 350-2AAT26	50	3.0	200-260 Δ /350-450Y	11.4 Δ /6.5Y	-230	190	68	78
		60	3.45	230-290 Δ /400-500Y	10.8 Δ /6.2Y	-150	120	71	
2	3MV 350-2AAT37	50	4.0	350-450 Δ /610-725Y	8.4 Δ /4.8Y	-350	310	69	92
		60	4.6	400-500 Δ /690-725Y	8.2 Δ /4.7Y	-280	230	72	
3	3MV 350-2AAT47	50	5.5	350-450 Δ /610-725Y	11.1 Δ /6.4Y	-530	480	69	100
		60	6.3	400-500 Δ /690-725Y	11.0 Δ /6.4Y	-480	390	73	
4	3MV 350-2AAT57	50	7.5	350-450 Δ /610-725Y	15.0 Δ /8.7Y	-530	700	69	126
		60	8.6	400-500 Δ /690-725Y	15.1 Δ /8.8Y	-580	610	73	
5	3MV 350-2AAT67	50	11	350-450 Δ /610-725Y	22.0 Δ /12.7Y	-530	870	72	132
		60	12.6	400-500 Δ /690-725Y	22.0 Δ /12.9Y	-580	930	76	

Other voltage ranges

50 Hz	50 Hz Voltage range	60 Hz Voltage range	86 Hz(5000 rpm)	100 Hz(6000 rpm)	3MV...	<input type="checkbox"/>	<input type="checkbox"/>
3 IE2/							
200 V D/345 V Y 500 V Y 230 V D/400 V Y 400 V D/690 V Y	180-240 V D /310-415 V Y 450-550 V Y 200-260 V D /350-450 V Y 350-450 V D /610-725 V Y	200...275 V D/345...480 V Y 520...600 V Y 230...290 V D/400...500 V Y 400...500 V D/690...725 V Y	----- ----- 400 V D -----	400 V D ----- ----- -----		T T T	1 3 6 7

3) Performance can different if standard motors are used. Please refer to corresponding data sheets.